

Vehicle accident reconstruction

The forensic automotive investigation services provided by EFI Global include an in-depth analysis of accidents and other vehicle damage that helps determine how the collision occurred and if automotive systems contributed to a loss. Our team includes mechanical and electrical engineers and fire investigators who specialize in various types of incidents.

Services and expertise

When there are discrepancies in the witness accounts, when vital liability questions cannot be answered or when witness accounts are unreliable/fraudulent, our engineers can scientifically determine the actual facts of a vehicular collision. Our experienced team also provides a wide range of investigative services for clients.

Evaluations for soft tissue injury claims

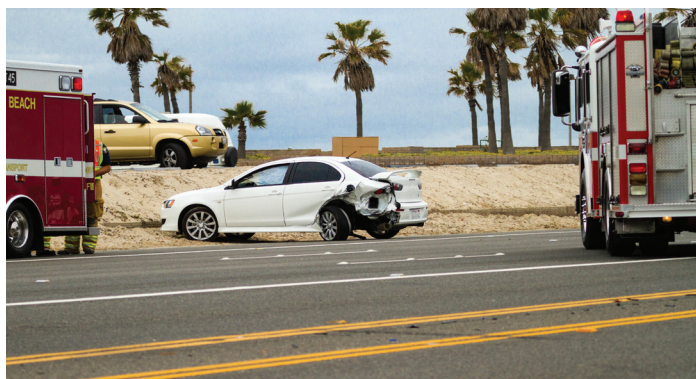
Substantial medical claims after accidents are a growing concern for the insurance industry. EFI provides technical evaluations of collisions to distinguish between accidents with and without injury-producing potential.

Single and multi vehicle accident investigations

Our investigators analyze data from single and multi vehicle events to determine if a mechanical defect occurred with steering, brakes, suspension or throttle, causing one of the drivers to lose control.

Burglary and theft investigations

Forensic automotive engineers and forensic locksmiths can perform detailed lock examinations to establish whether security devices were compromised, manipulated, picked or bypassed.



Laboratory and field inspections

At EFI Global, we conduct on-site inspections for all types of vehicles or other large equipment. Depending on the damage, we also provide cost-effective options for smaller items/parts to be shipped to our laboratory for analysis.



EDR and Berla – Vehicle forensic tools

Our team uses event data recorders (EDR) and Berla tools as a part of many accident investigations. They provide solutions for our investigators to identify, acquire and analyze critical information stored within vehicle systems to uncover key evidence to help determine what happened, where it occurred and who was involved.

To learn more about our vehicle accident reconstruction services, contact:

P. 888.888.2467 **E.** assignaproject@efiglobal.com

To learn more about our integrated and customized solutions, visit EFIGLOBAL.COM