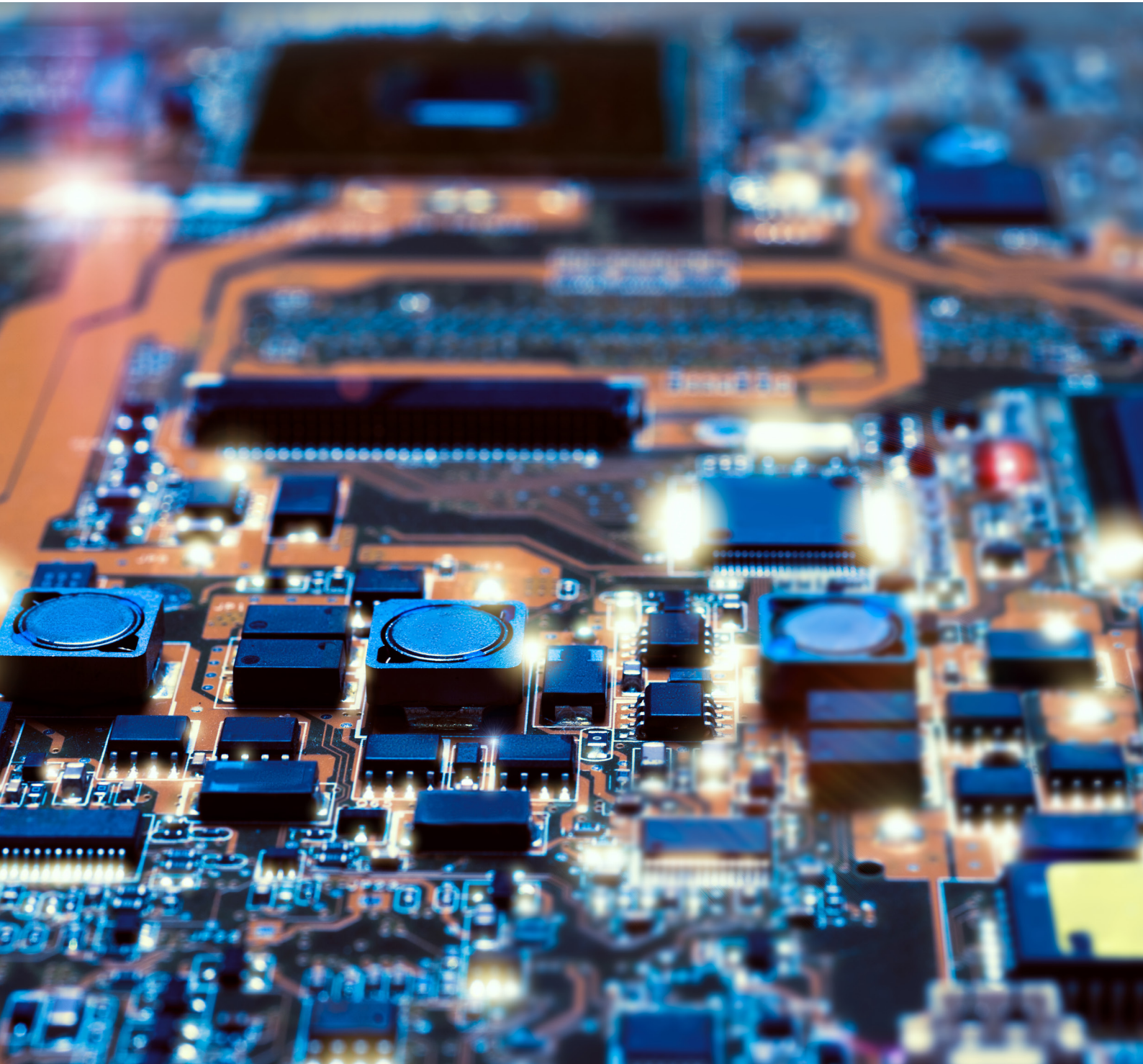


Cyber

New Zealand



Cyber

With cyber related claims becoming exceedingly common in this digital age, you can rest assured Sedgwick has the right team of experts when a cyber breach occurs.

Sedgwick is one of the largest loss adjusting, claims management and risk solutions firms in the world. We employ more than 27,000 colleagues, located in 65 countries. We work with businesses, insurers, brokers and policy holders to provide expert advice when losses occur.

In New Zealand, we employ over 220 people, across 22 branches nationwide. Our major & complex loss division employs over 30 loss adjusters, each with many years' experience in their respective areas of expertise.

Our success is based on a prompt and effective response during a cyber breach, ensuring our clients' needs are met consistently and seamlessly.

With our 24/7 crisis line, specialist cyber adjusters are available for immediate response to any loss situation. When you partner with Sedgwick, you can be confident you have the right person to proactively manage your cyber claims.

Our approach

The right team – Our cyber experts provide practical advice and industry leading solutions to you and your clients.

Responsiveness – 24hr call centre -

With the support of Sedgwick's regional and global network, spanning 65 countries, we are able to rapidly respond to any loss situation.

Integrity and trust – These are essential elements of our relationships, giving our clients confidence that when you appoint Sedgwick you have the right team for the job.

Technical expertise – Our experts have the knowledge to determine the correct contractual position, the right basis for measurement of cost and the appropriate procedure for managing the claim process.

Investigative response and digital forensics – Our team has the skills and expertise to achieve your goal.

Our solution

We coordinate the crisis response by engaging the appropriate parties to respond to each specific cyber incident, which minimises disruption to your customers' business operations, therefore, reducing the loss.



27,000
colleagues



65
countries



22
Branches

For more information on how we can help, please contact:

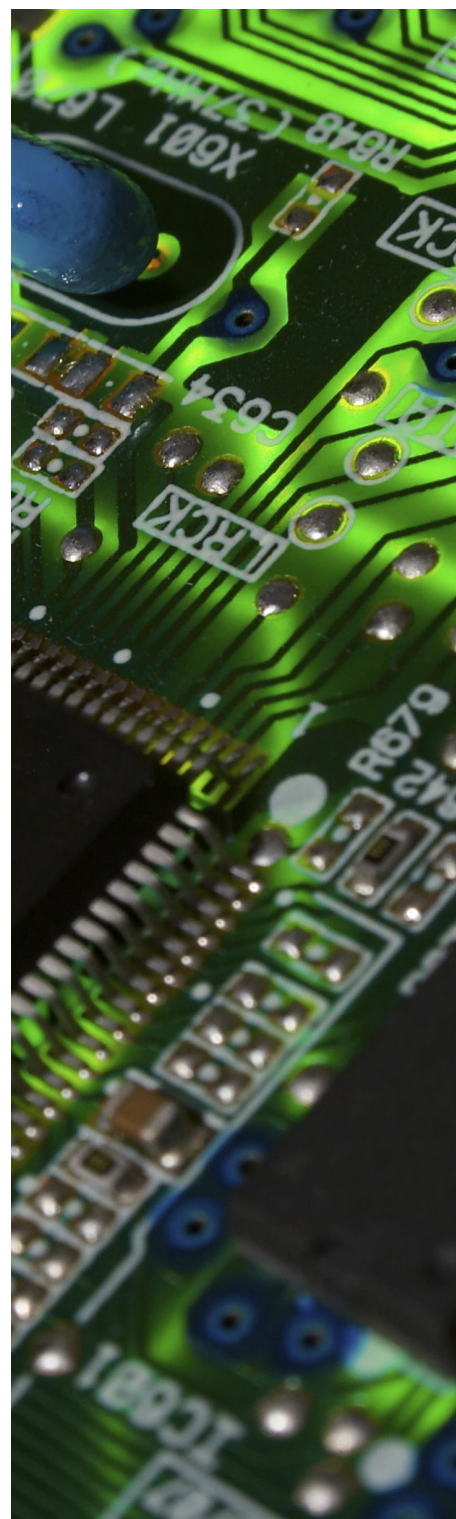
Stephen Kay

Head of Cyber and
Executive Adjuster



M +64 21 774 587

E stephen.kay@nz.sedgwick.com



Biographies



Stephen Kay

ANZIIF (Fellow) FCLA PG Cert
(Insurance Law) Grad Dip (Ops Mgmt)

Head of Cyber & Executive Adjuster Auckland

M +64 21 774 587
E stephen.kay@nz.sedgwick.com

Stephen is the head of our MCL Global division in New Zealand and is an industry recognised expert in cyber claim response.

With more than 18 years' experience, he specialises in investigating and adjusting large liability and crisis management claims throughout New Zealand and around the world.

Stephen leads our cyber response offering and has developed a strong team to handle cyber claims. He regularly presents to industry bodies on this topic.



Tim Munday

ANZIIF (Assoc) ACLA

Specialist Liability & Cyber Adjuster Auckland

M +64 21 774 167
E tim.munday@nz.sedgwick.com

Tim began his insurance career in 1998, becoming a loss adjuster in 2000. Tim joined the MCL Global division in 2018, as a specialist liability and cyber adjuster.

Over the years Tim has developed a wealth of knowledge and technical know-how adjusting liability and cyber claims.



Daniel Palmer

Specialist Liability & Cyber Adjuster Auckland

M +64 27 591 3756
E daniel.palmer@nz.sedgwick.com

Daniel joined Sedgwick in 2019 as an experienced insurance professional. Daniel's previous experience includes five years working exclusively with claims for a major insurer before transitioning into a loss adjusting role in 2017. Daniel has handled claims ranging from everyday BAU losses to complex and technical commercial losses, including fire and earthquake.

Daniel joined the MCL Global Division in 2021, and works closely with senior cyber & liability adjusters to further refine his well-developed adjusting skills.

Biographies



Tim Stephenson

BSc

Loss Adjuster

Napier

M +64 21 222 4117

E tim.stephenson@nz.sedgwick.com

Tim has more than 25 years' experience in the insurance industry, including 20 years as a loss adjuster. He has vast experience adjusting liability, property and financial loss claims and has acquired the expertise to handle multifaceted cyber claims.



Leon Briggs

BCA (Hons) CA FCILA (UK) FCLA
ANZIIF (Fellow) CIP

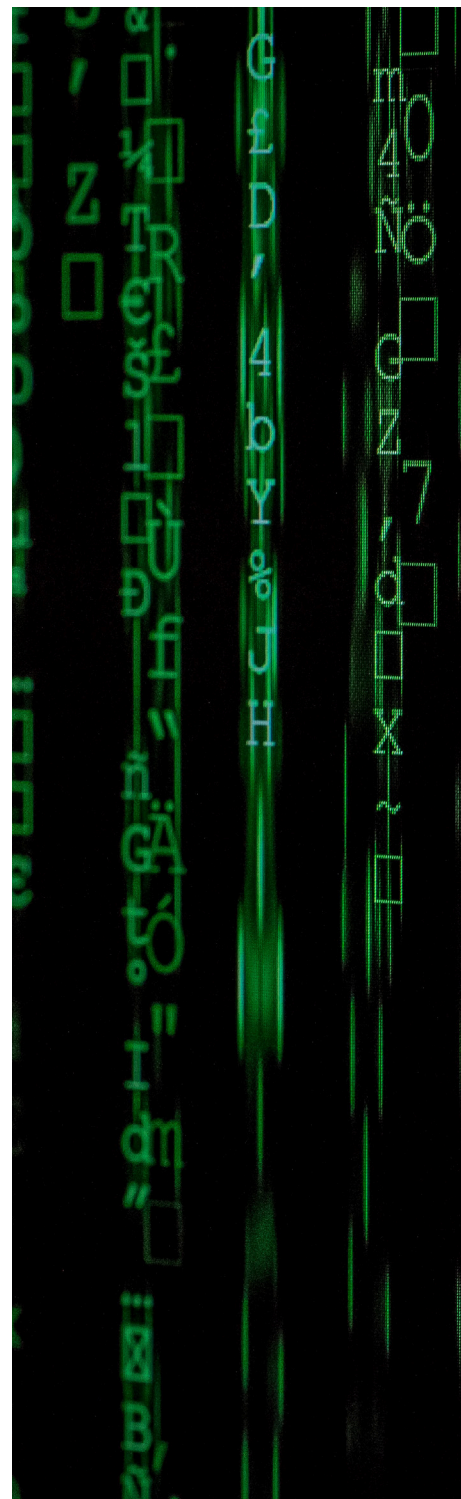
National Chief Adjuster

Wellington

M +64 21 879 788

E leon.briggs@nz.sedgwick.com

Leon is Sedgwick's National Chief Adjuster, with over 30 years' industry experience. He is a specialist in property, liability and financial loss investigation, including litigation support across New Zealand, the US and Asia. Leon regularly shares his knowledge with many industry organisations, such as the Insurance Council of New Zealand.





Andrew Jameson

BCom, ACLA, ANZIIF (Snr Assoc)

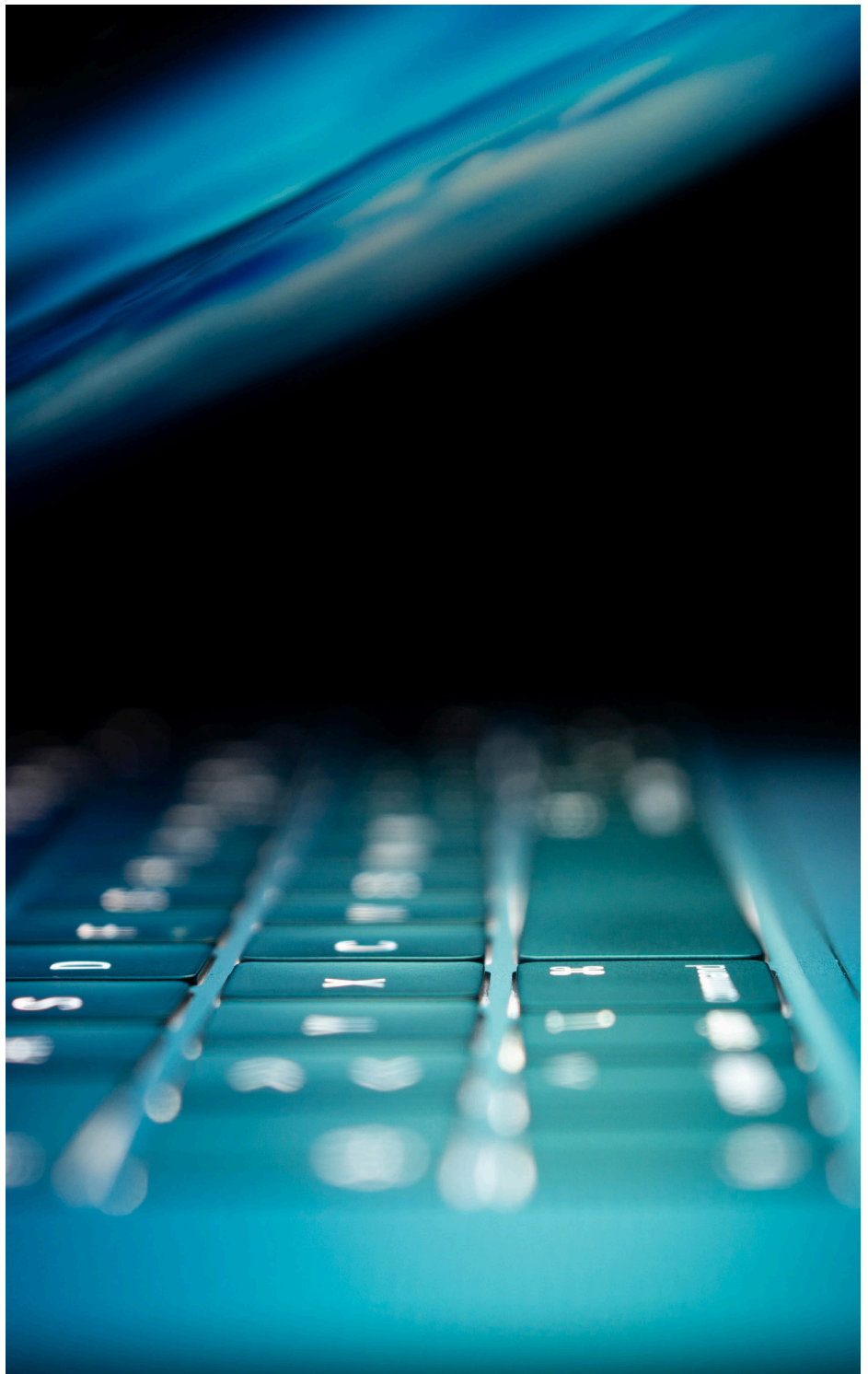
Chartered Loss Adjuster

Christchurch

M +64 21 320 224

E andrew.jameson@nz.sedgwick.com

Andrew has more than 35 years' experience handling liability, property and financial loss claims. His extensive experience provides him with the skills and capabilities to effectively adjust cyber claims.



Global solutions.
Local expertise.